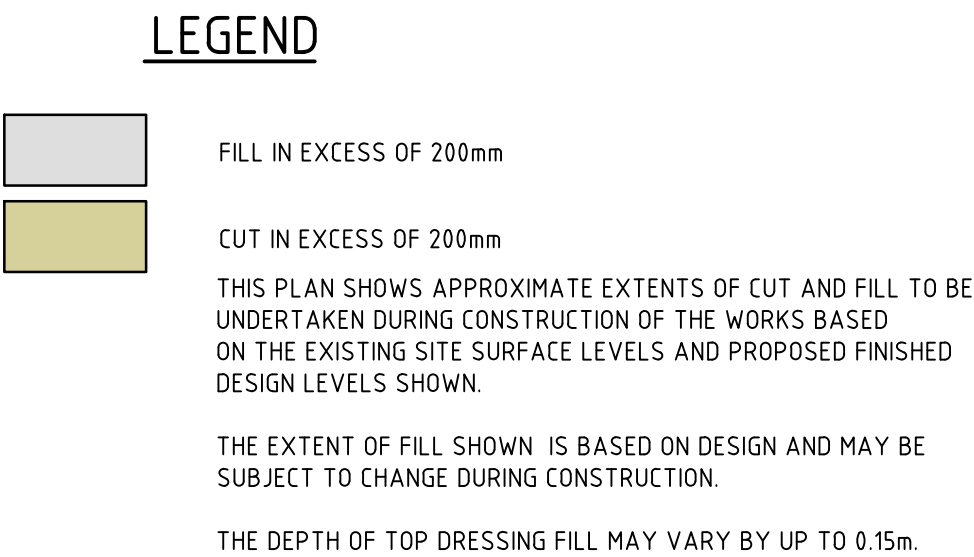
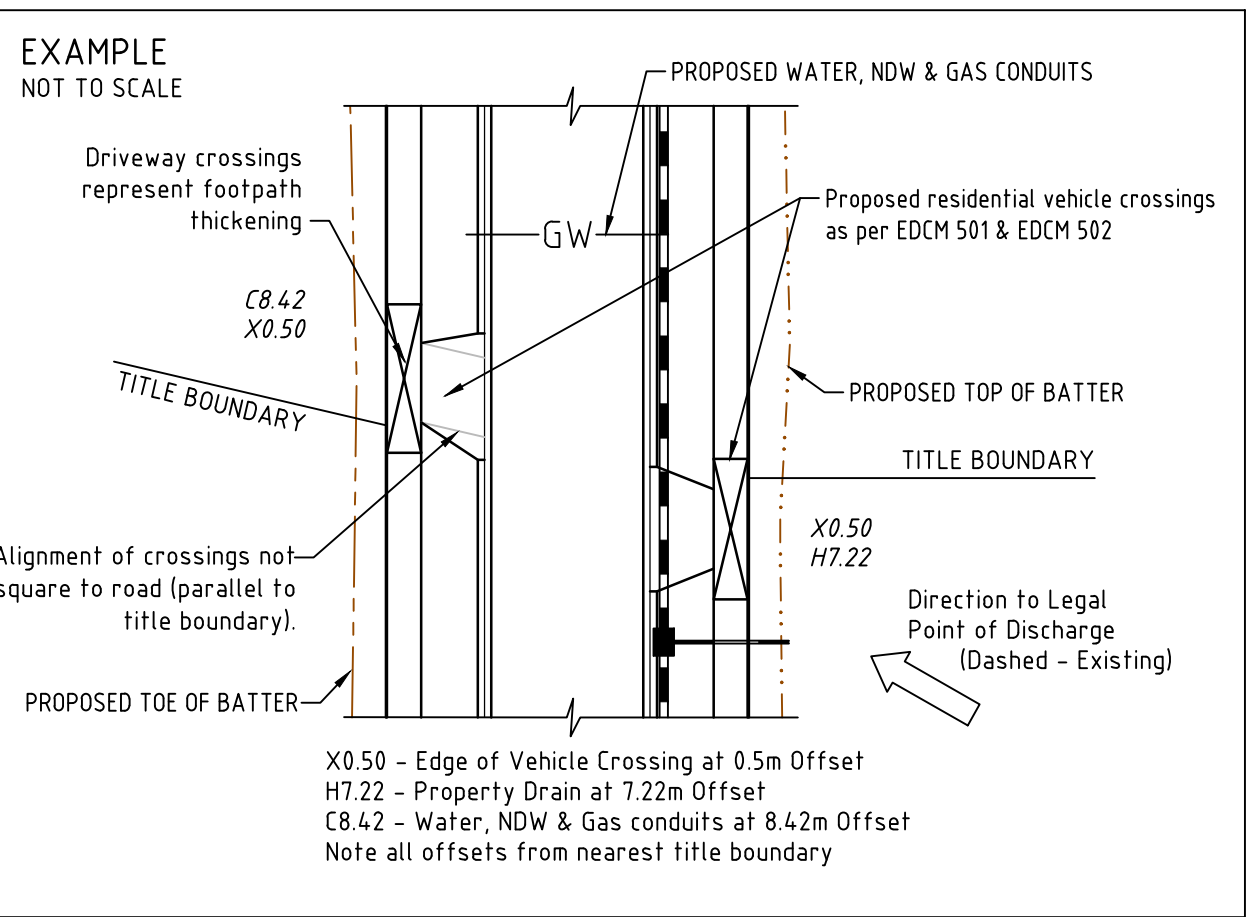
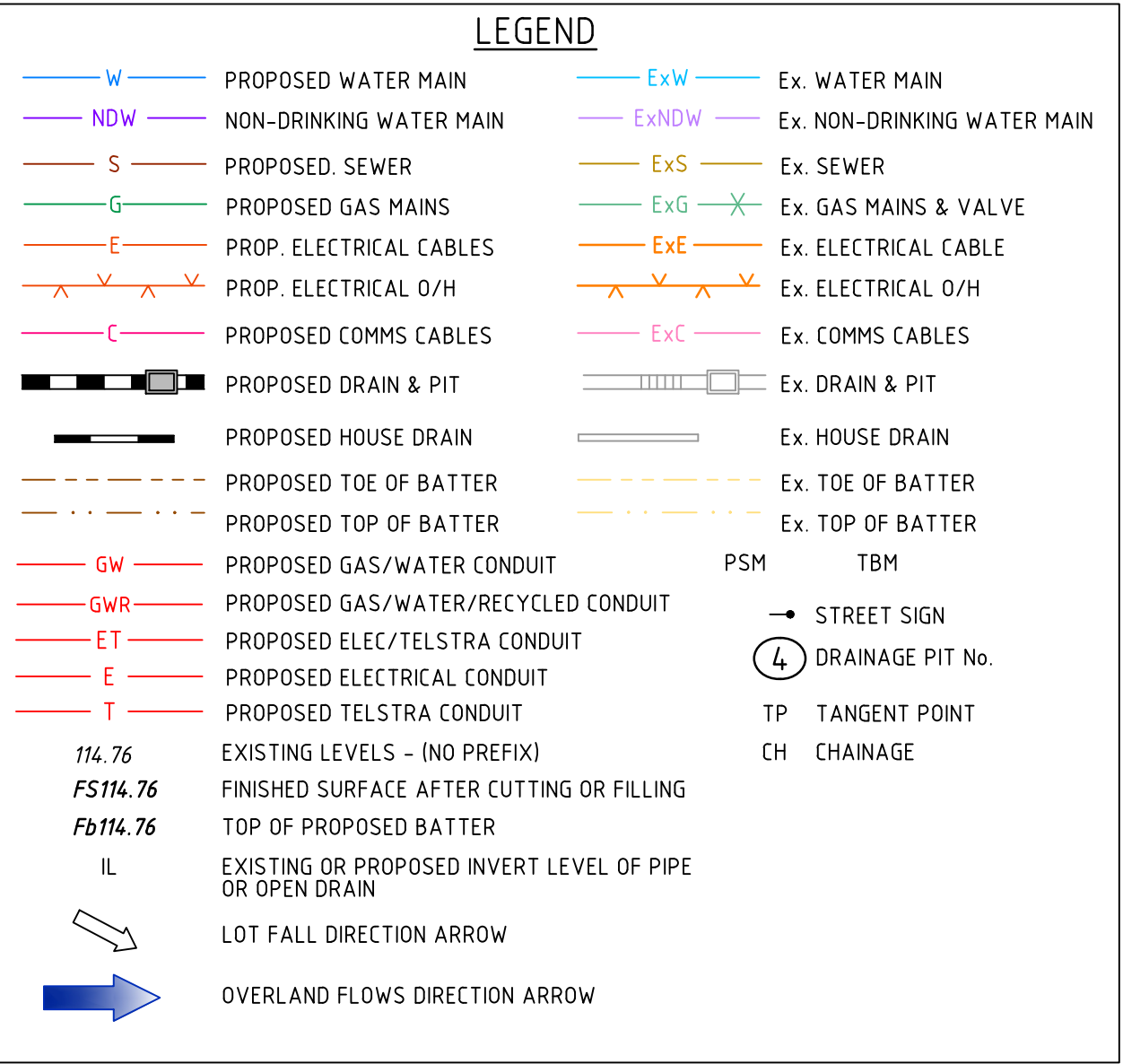
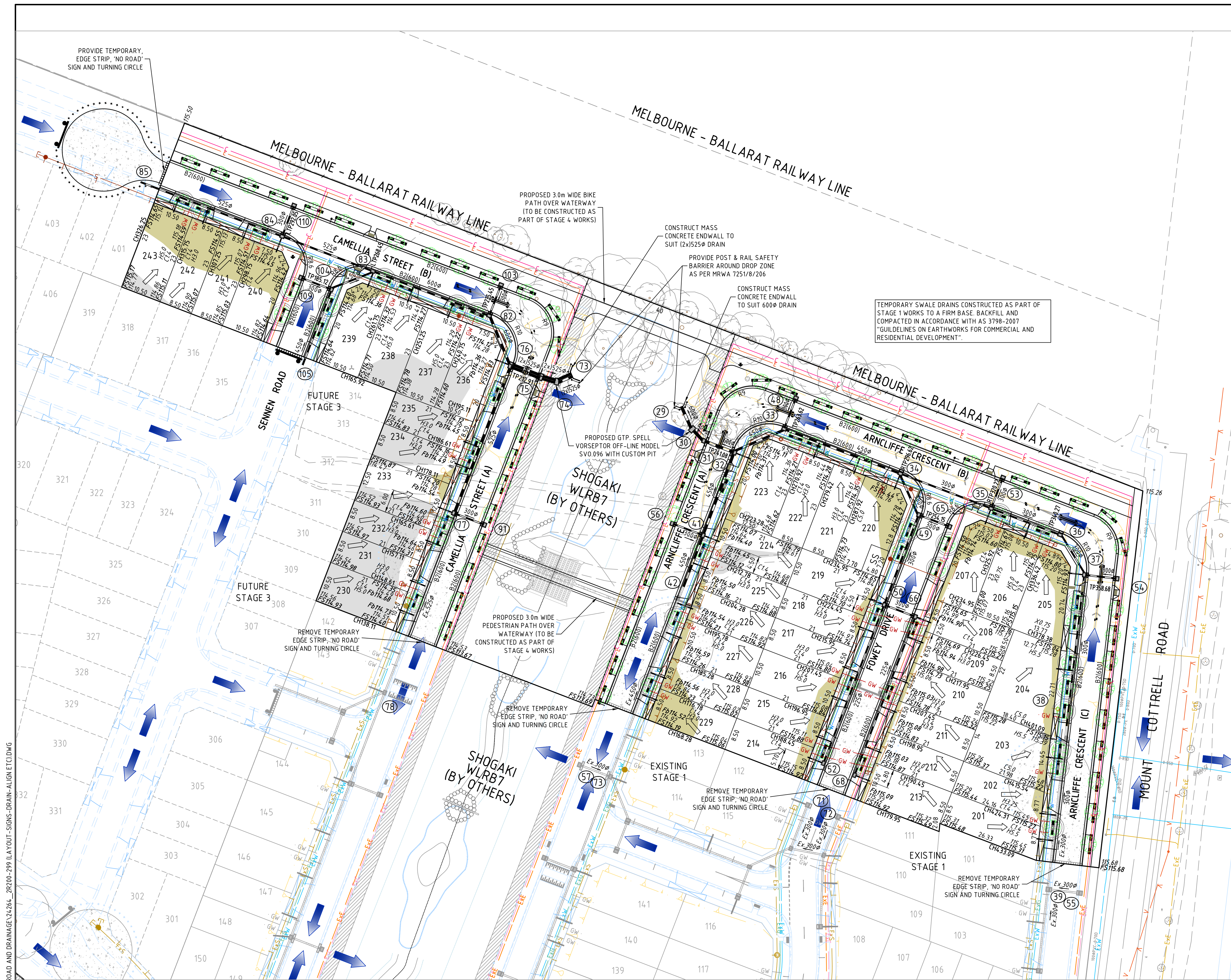


H:\24264\STAGE 2\4264E_2\CAD\DWG\SET\ROAD AND DRAINAGE\24264E_2R201-299 LAYOUT-SIGNS-DRAIN-ALIGN ETC.DWG



TENDER ISSUE

WARNING

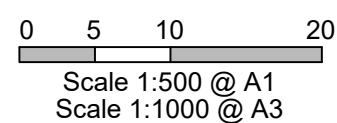
BEWARE OF UNDERGROUND SERVICES

The locations of underground services are approximate only and their exact position should be proven on site prior to commencing works. No guarantee is given that all existing services are shown.

PRELIMINARY ISSUE ONLY
NOT FOR CONSTRUCTION

THIS DRAWING IS NOT TO BE COPIED OR SCALED

VERSION	REMARKS	DATE	APP'D
B	PRELIMINARY ISSUE	08.08.25	LP
A	PRELIMINARY ISSUE	21.07.25	LP



MGA2020 ZONE 55

DRAWN BY	N. ROBINSON	DESIGNED BY	L. PHAN
MELWAY	34.3, K6	CHECKED BY	S. ANTONOPOULOS
DATUM	AHD	AUTHORISED BY	S. ANTONOPOULOS

REEDS CONSULTING

www.reedsconsulting.com.au
engineering@reedsconsulting.com.au

Lvl 14, 501 Swanston Street Melbourne Victoria 3000
p (03) 8440 3000

LAND SURVEYING
CIVIL ENGINEERING
PLANNING
DEVELOPMENT CONSULTING



MELTON CITY COUNCIL
BALMORAL NORTH ESTATE
COBBLEBANK, STAGE 2
LAYOUT PLAN

DRAWING No.	2R201	VERSION	B
REFERENCE	24264E/2		